
Institute for Cyber Security

Prof. Ravi Sandhu
Executive Director and Endowed Chair

Private Briefing
June 18, 2013

ravi.sandhu@utsa.edu
www.profsandhu.com
www.ics.utsa.edu

**Human
Driven**

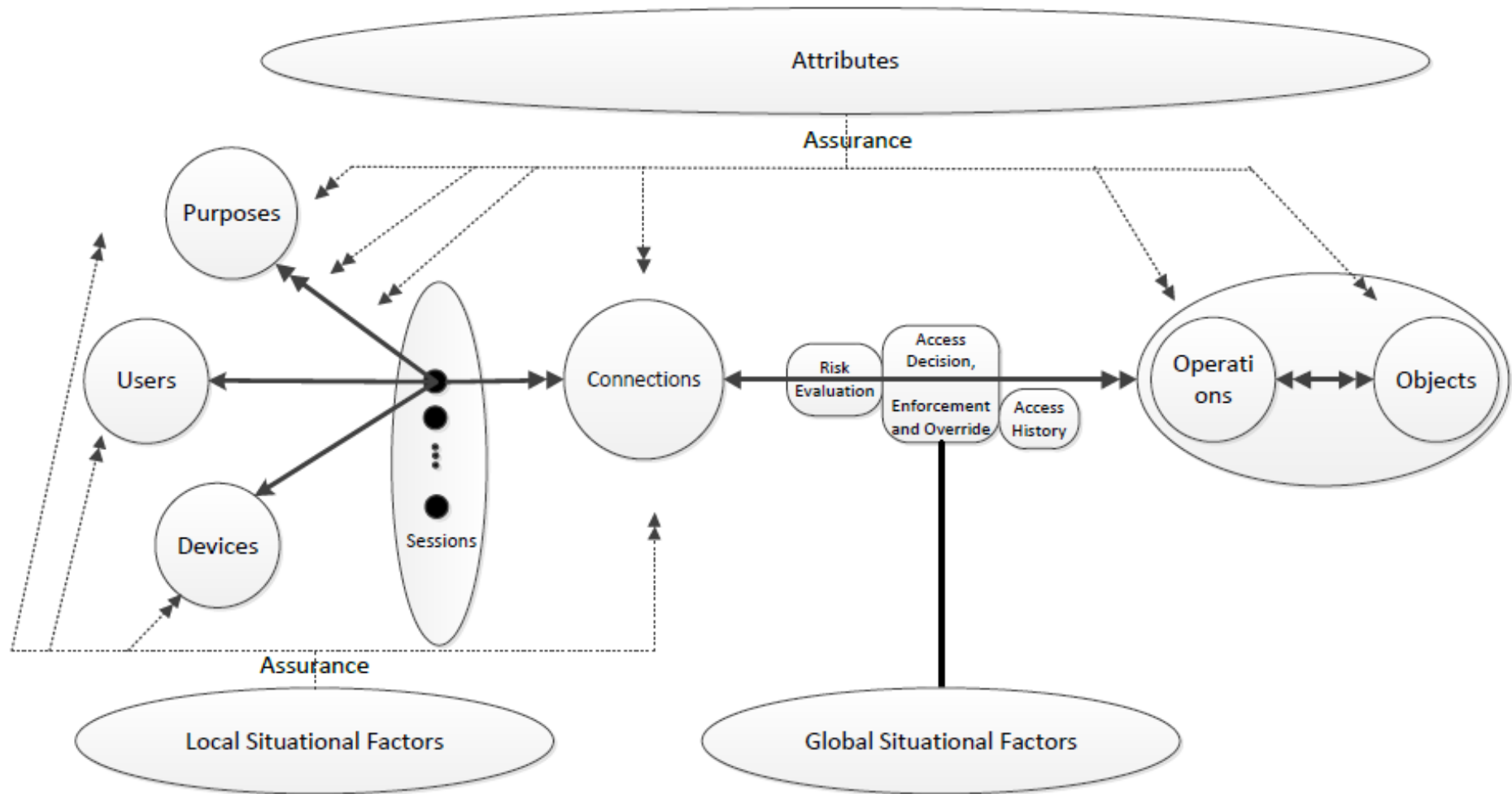


**Discretionary Access Control
(DAC), 1970**

**Mandatory Access Control
(MAC), 1970**

**Role Based Access Control
(RBAC), 1995**

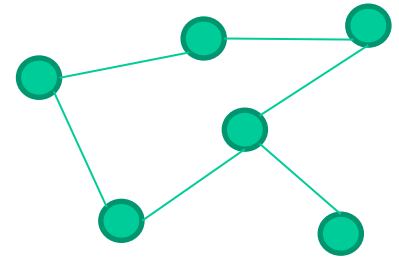
**Attribute Based Access Control
(ABAC), ????**



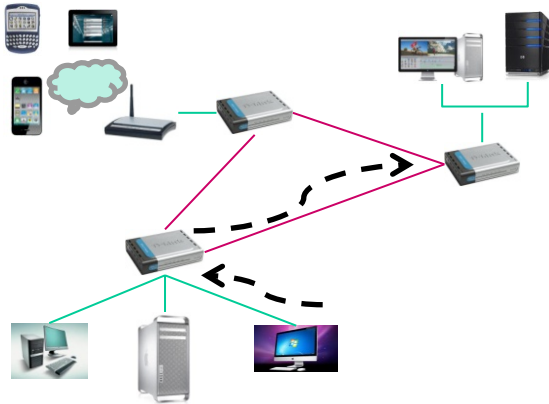
Access and Usage Control
of Data and its Provenance



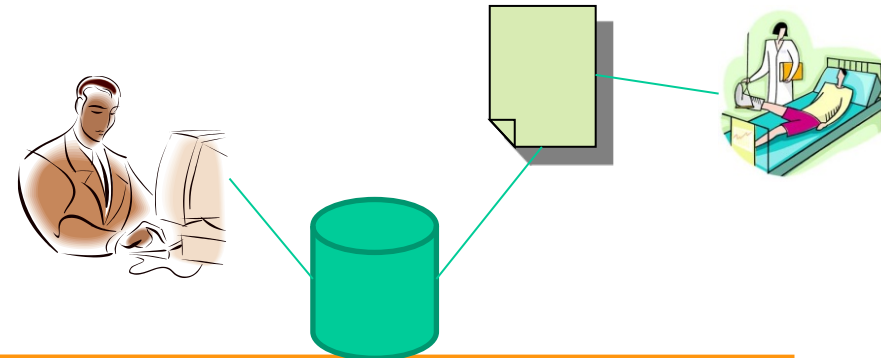
Data Trustworthiness
(e.g., sensor networks)



Data Forensics
(e.g., SIM tools)



Data Privacy
(e.g., track hospital records)



etcetera